



TECHNICAL SPECIFICATION

Chase Nipple

Used to terminate the threaded conduit into enclosure

Insulated Throat (Optional)

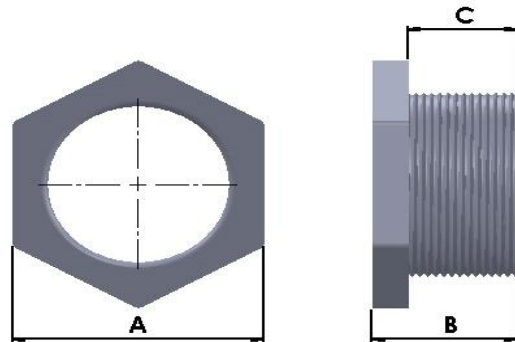
(Use suffix IT with Cat No. for Insulated Throat)

Material: Iron

(Use suffix S with Cat No. for Steel / SS for Stainless steel)

Finish: ElectroGalvanized

(Use suffix HDG with Cat No. for Hot Dip Galv.)



CATNO.	SIZE	DIMENSIONS		
		A	B	C
CNP050	1/2"	22.00	14.50	9.50
CNP075	3/4"	27.00	19.50	14.50
CNP100	1"	36.00	20.50	15.50
CNP125	1-1/4"	46.50	28.50	22.00
CNP150	1-1/2"	50.80	28.50	22.00
CNP200	2"	65.00	31.75	25
CNP250	2-1/2"	75.00	36.50	28.5
CNP300	3"	90.00	39.50	31.5
CNP350	3-1/2"	103.50	41.00	33
CNP400	4"	115.00	43.00	33.5
CNP500	5"	141	54	44.5
CNP600	6"	167	57	47.5

** All dimensions in mm