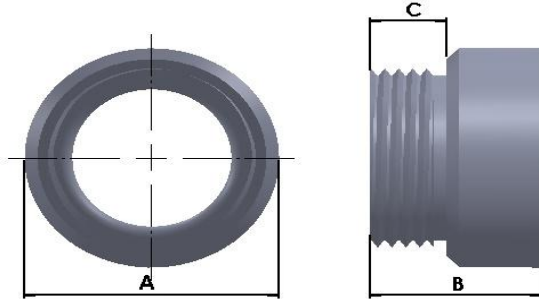


# TECHNICAL SPECIFICATION

## Enlargers



Used to increase the hub size of fitting to connect larger size conduit

Grain finish for better gripping during tightening

Rounded collar for smooth wire pulling

**Material:**

Upto 1" steel as standard

Above 1" Iron as standard

(Use suffix S with Cat No. for Steel / SS for Stainless steel)

**Finish: Electrogalvanized**

(Use suffix HDG with Cat No. for Hot Dip Galv.)



CATNO.	SIZE (F X M)	DIMENSIONS		
		A	B	C
RM075050	3/4" X 1/2"	30.00	41.75	18.61
RM100050	1" X 1/2"	36.68	49.33	21.79
RM100075	1" X 3/4"	36.68	49.33	21.79
RM125050	1-1/4" X 1/2"	48.75	47.43	19.70
RM125075	1-1/4" X 3/4"	48.75	47.43	19.70
RM125100	1-1/4" X 1"	48.75	47.43	19.70
RM150050	1-1/2" X 1/2"	56.24	47.43	19.70
RM150075	1-1/2" X 3/4"	56.24	47.43	19.70
RM150100	1-1/2" X 1"	56.24	47.43	19.70
RM150125	1-1/2" X 1-1/4"	56.24	47.43	19.70
RM200050	2" X 1/2"	66.72	47.43	19.70
RM200075	2" X 3/4"	66.72	47.43	19.70
RM200100	2" X 1"	66.72	47.43	19.70
RM200125	2" X 1-1/4"	66.72	47.43	19.70
RM200150	2" X 1-1/2"	66.72	47.43	19.70

\*\* All dimensions in mm