



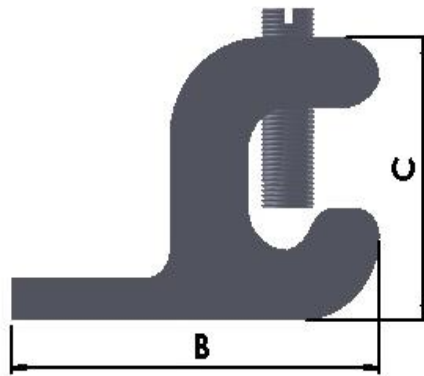
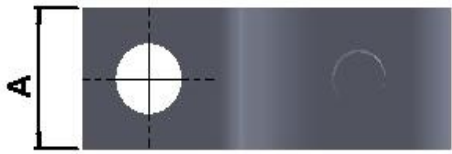
## TECHNICAL SPECIFICATION

### Grounding Lugs - Lay In Type

Used for grounding of conductors

Lay In Design for attachment with other fittings

Material: Aluminium



CATNO.	SIZE	DIMENSIONS		
		A	B	C
LUG1	14-4	10.00	27.00	19.00
LUG2	14-1/0	15.00	38.00	29.00
LUG3	6-250MCM	19.00	57.00	45.00

\*\* All dimensions in mm

