



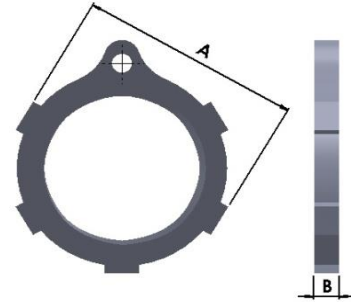
## TECHNICAL SPECIFICATION

### Grounding Locknut

Used to connect the conduit or fitting to enclosure with grounding screw

**Material:** Iron

**Finish:** Electrogalvanized  
(Use suffix HDG with Cat No. for Hot Dip Galv.)



CATNO.	SIZE	DIMENSION	
		A	B
GL050	1/2"	28.70	5.00
GL075	3/4"	35.10	5.00
GL100	1"	42.20	6.00
GL125	1-1/4"	57.90	6.00
GL150	1-1/2"	60.50	6.00
GL200	2"	73.20	6.00
GL250	2-1/2"	90.40	11.00
GL300	3"	108.00	11.00
GL350	3-1/2"	122.20	11.00
GL400	4"	138.20	11.00

\*\* All dimensions in mm