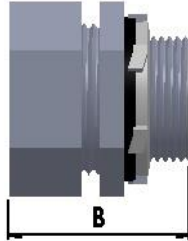


# TECHNICAL SPECIFICATION



## LC Connector - Straight

Used to connect Lead Coated Conduit to enclosure/ Fittings

Provides liquid tight connection

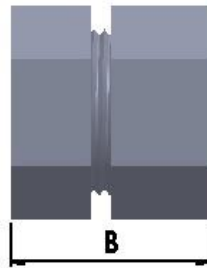
Material: Steel

Finish: Electrogalvanized  
(Use suffix HDG with Cat No. for Hot Dip Galv.)



CATNO.	THREAD	SIZE	DIMENSIONS	
			A	B
LTS20LC	M20	3/4"	32.00	36.00

\*\* All dimensions in mm



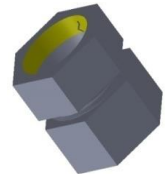
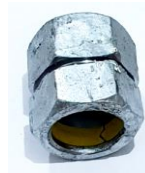
## LC Connector - Female

Used to connect Lead Coated Conduit to Rigid Conduit

Provides liquid tight connection

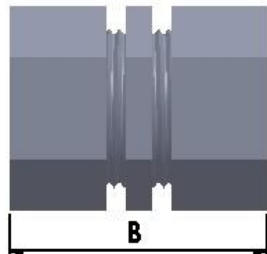
Material: Steel

Finish: Electrogalvanized  
(Use suffix HDG with Cat No. for Hot Dip Galv.)



CATNO.	THREAD	SIZE	DIMENSIONS	
			A	B
LTSF20LC	M20	3/4"	32.00	36.00

\*\* All dimensions in mm



## LC Coupling

Used to connect same size Lead Coated Conduit

Provides liquid tight connection

Material: Steel

Finish: Electrogalvanized  
(Use suffix HDG with Cat No. for Hot Dip Galv.)



CATNO.	THREAD	SIZE	DIMENSIONS	
			A	B
LTCP20LC	M20	3/4"	32.00	46.00

\*\* All dimensions in mm