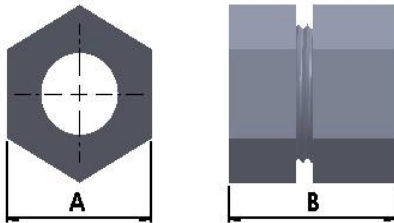




TECHNICAL SPECIFICATION

LC Connector - Female



Used to connect Lead Coated Conduit to Rigid Conduit

Provides liquid tight connection

Material: Steel

Finish: Electrogalvanized
(Use suffix HDG with Cat No. for Hot Dip Galv.)

CATNO.	THREAD	SIZE	DIMENSIONS	
			A	B
LTSF20LC	M20	3/4"	32.00	36.00

** All dimensions in mm

