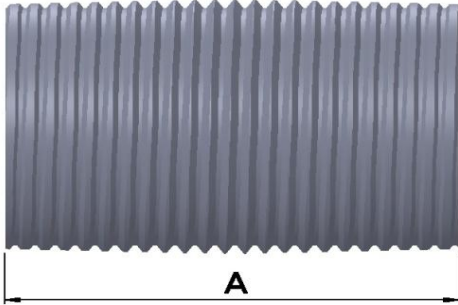


# TECHNICAL SPECIFICATION

## Close Nipple



**Material:** Steel

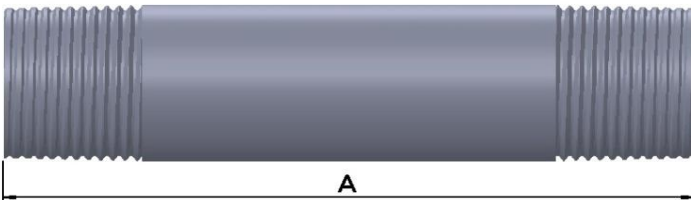
**Finish:** Electrogalvanized  
(Use suffix HDG with Cat No. for Hot Dip Galv.)



CATNO.	SIZE	DIMENSIONS	
		A	
NP050	1/2"	28.50	
NP075	3/4"	35.00	
NP100	1"	38.00	
NP125	1-1/4"	41.50	
NP150	1-1/2"	44.50	
NP200	2"	50.80	
NP250	2-1/2"	63.50	
NP300	3"	76.25	
NP350	3-1/2"	80.00	
NP400	4"	89.00	

\*\* All dimensions in mm

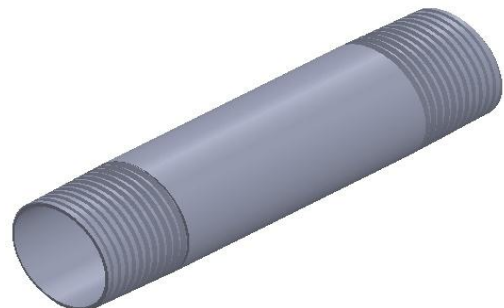
## Long Nipple



**Material:** Steel

Add size suffix to cat no. for length eg LN100 - 12")

**Finish:** Electrogalvanized  
(Use suffix HDG with Cat No. for Hot Dip Galv.)



CATNO.	SIZE	DIMENSIONS	
		A	
LNP050	1/2"	1-1/2" upto 12"	
LNP075	3/4"	1-1/2" upto 12"	
LNP100	1"	1-1/2" upto 12"	
LNP125	1-1/4"	1-1/2" upto 12"	
LNP150	1-1/2"	1-1/2" upto 12"	
LNP200	2"	1-1/2" upto 12"	
LNP250	2-1/2"	1-1/2" upto 12"	
LNP300	3"	1-1/2" upto 12"	
LNP350	3-1/2"	1-1/2" upto 12"	
LNP400	4"	1-1/2" upto 12"	

\*\* All dimensions in mm