

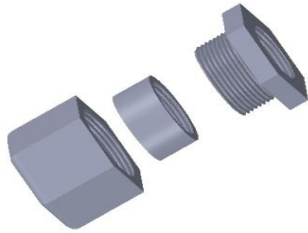
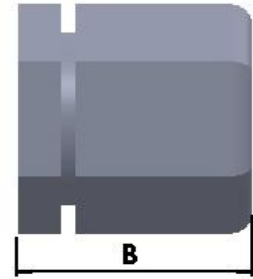
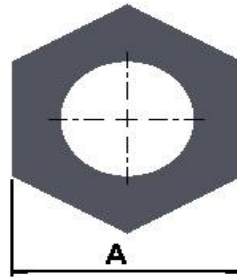
# TECHNICAL SPECIFICATION

## Three Piece Coupling

Used to connect conduits of same size

**Material:** Iron  
(Use suffix S with Cat No. for Steel / SS for Stainless steel)

**Finish:** Electrogalvanized  
(Use suffix HDG with Cat No. for Hot Dip Galv.)



CATNO.	SIZE	DIMENSIONS	
		A	B
TPC050	1/2"	35.00	33.00
TPC075	3/4"	40.00	39.00
TPC100	1"	48.00	41.00
TPC125	1-1/4"	60.00	54.00
TPC150	1-1/2"	72.00	60.00
TPC200	2"	78.00	67.00
TPC250	2-1/2"	103.00	71.00
TPC300	3"	111.00	76.00
TPC350	3-1/2"	119.00	90.00
TPC400	4"	135.00	92.00
TPC500	5"	176.00	93.00
TPC600	6"	190.00	93.00

\*\* All dimensions in mm